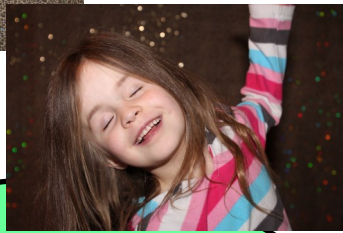


Winnebago County 4-H—Photography Project

PORTRAITS

Models:

- ◇ Strike a pose
- ◇ Hold still



Look! By moving the model farther away from the shiny background material, it gave the background a completely different look!

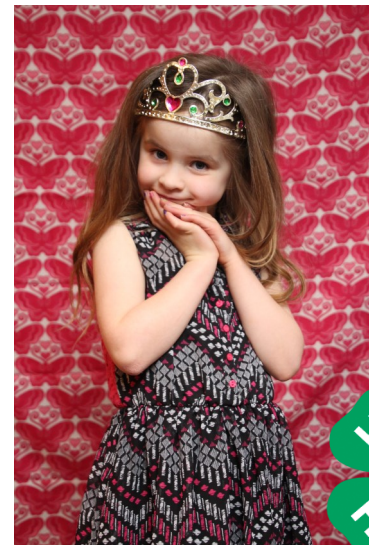


Photographers:

- ◇ Make sure the background fills the whole photo
- ◇ You might have to move your body
- ◇ You might have to move your model
- ◇ Be on eye level with your model

Tips for Mastery:

- ◇ Don't cut off a person's joints (elbows, knees, etc.)
- ◇ Focus on the person's eyes
- ◇ Situate the eyes 1/3 of the way from the top of the shot
- ◇ Use a simple background
- ◇ Get rid of shadows by using a bounce flash
- ◇ Blur the background by stepping back and zooming in or by using a low f-stop number



<https://winnebago.extension.wisc.edu/4h/projects/photography/>

Created by: Kim Hoffman 2019

For more information about Winnebago County 4-H, contact Extension Winnebago County @ 920-232-1974