

MY
**WAY
OUT** →



VARIOUS DATES &
LOCATIONS

MADISON: APRIL 11
MILWAUKEE: APRIL 13
GREEN BAY: APRIL 20
OSHKOSH: APRIL 21
APPLETON: APRIL 25

ADMIT ONE

General Admission

Adult

SHORT FILM

**MISTAKES DO
NOT DEFINE
WHO YOU ARE**

Free Screening

\$0.00

\$0.00



Extension
UNIVERSITY OF WISCONSIN-MADISON

SPONSORED BY
Brown County
Dane County
Milwaukee County
Outagamie County
Winnebago County



Funded in part by
WISCONSIN HUMANITIES

WELCOME TO SECOND CHANCE MONTH

*Mistakes Do Not Define
Who You Are*

GOV. TONY EVERS PROCLAMATION

“WHEREAS; forgiveness, empathy, compassion, and respect are core Wisconsin values, and here in Wisconsin, we treat our neighbors with dignity and respect; and

WHEREAS; providing a second chance for formerly incarcerated Wisconsinites who have made amends and put forth the effort to be positive contributors in their communities, is a key opportunity to open doors of opportunity for individuals, their families, and communities across our state and to bolster our state’s economy and workforce;

WHEREAS; with more than 20,000 individuals currently incarcerated and more than 63,000 individuals on probation and parole in Wisconsin alone, redemption, second chances, and efforts to invest in people are important to the future and prosperity of the state; and...”



**Mistakes Do Not Define
Who You Are**

AGENDA OVERVIEW

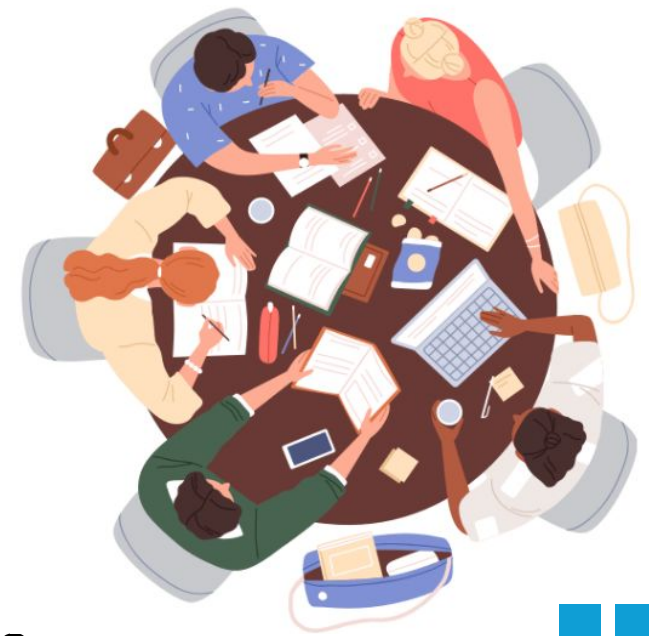


- Welcome/Introductions
- Wisconsin Humanities Council Goals
- Introduction to Video: *Mistakes Do Not Define Who You Are*
 - Small group breakouts/Structured questions
 - Communication agreements/timed responses
- UW-Madison Extension Reentry Program Initiatives
 - Resources
 - Volunteer Opportunities
 - Q&A
- Closing
 - Share a one-word description of your experience here today.

***Mistakes Do Not Define
Who You Are***

Reflective Structured Dialogue Model

- **Goal:** Listen to views different from your own based on their assumptions, values and/or experiences without judgment or response
- **Process:**
 - You will each be asked to respond to a question in a 'go-around' format with a time limit of 1 minute each with no interruptions; you may pass
 - You should speak from your own experience with no 'generalizations' about groups or individuals
 - You will agree to abide by this communication process (no interruptions, persuasion, or rebuttals allowed)
 - Facilitator may interrupt you if your time ends; finish your sentence as we move to next person



***Mistakes Do Not Define
Who You Are***

FACILITATED SMALL GROUP QUESTIONS:

- Question #1

What did you recognize as a cultural bias or norm that has been part of your perception of individuals who have been incarcerated? What has had the most influence on you?

- Question #2

What actions or experiences would better inform you, enlighten you or contradict some of your long-held beliefs to help you feel more compassionate and/or alter your perceptions?

- Question #3

What could each of us do to ensure individuals have access to affordable housing, employment, and supportive services to prevent recidivism?

Open Dialogue in small groups: 5-8 minutes

***Mistakes Do Not Define
Who You Are***

OPEN DIALOGUE

Small groups

- Do you have any comments or questions about something that was shared previously in the circle?
- Is there anything that you would like to add about what you saw/heard in the video?

Large group: share out key takeaways from your small group.



***Mistakes Do Not Define
Who You Are***

UW-Madison Extension Reentry Programs & Resources

- Reentry Ready Resources
- Entrepreneur in Training Partnership (EITP)
- The Literacy Link
- UW Center for Cooperatives



Reentry Ready Resources

- Financial education programming structured to empower individuals in taking control of their personal finances post-release.
- County Specific 'Welcome Home' guides are available as a tool to connect individuals with helpful resources.
- A range of topics are addressed that include housing, employment, legal and voting questions, financial planning, and insurance.



<https://finances.extension.wisc.edu/reentry-ready-resources/>

Entrepreneur in Training Partnership



Extension

UNIVERSITY OF WISCONSIN-MADISON

DEFY
VENTURES



INSTITUTE
FOR CORPORATE AND SOCIAL IMPACT



*Mistakes Do Not Define
Who You Are*

Entrepreneur In Training Partnership (EITP)

- Teach **entrepreneurship, career readiness, & personal development** inside WI prisons and in the community post-release.
- **Volunteers invited** to prison and community-based events (*QR code points to registration page*)
- Program requires investment of time but not money (Free!)
- Prison program **finishers have a recidivism rate of <15% after 3 years** nationally
- 31 finishers have incorporated 16 businesses since 2021.



go.wisc.edu/EITPartnership

The Literacy Link Project



Extension

UNIVERSITY OF WISCONSIN-MADISON



THE LITERACY LINK 

Connecting children and parents in justice-involved families through literacy-rich experiences

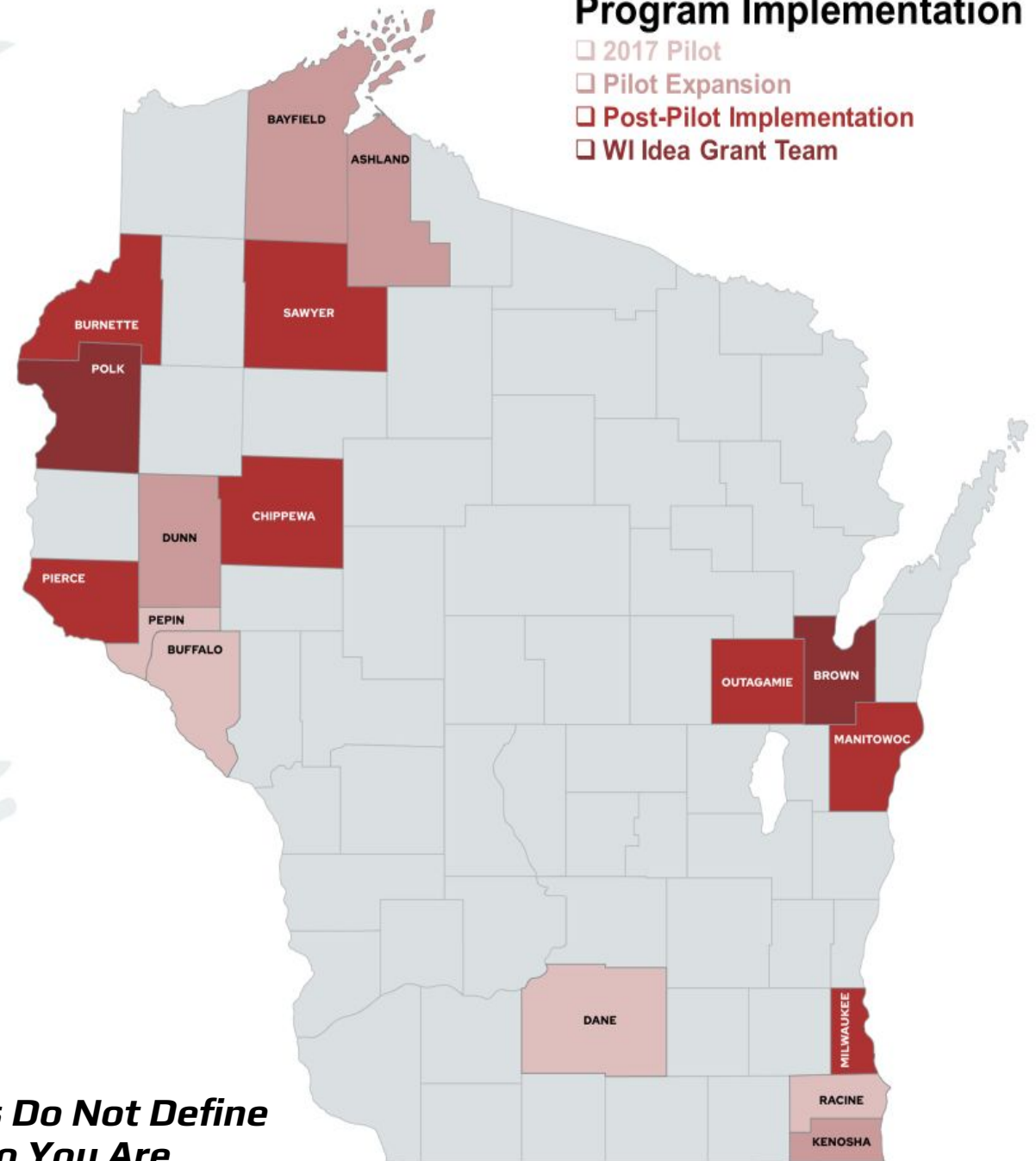
<https://theliteracylink.extension.wisc.edu>

The Literacy Link

- Began as a pilot in 4 WI Counties in 2017
- Led by Extension Educators
- Program's Aim:
 - **Promote Literacy Skills** in children by creating literacy-rich experiences in justice settings
 - **Foster Healthy Family Interactions** between children and their justice-involved parents and caregivers
- Currently serving parents in **16 correctional facilities** throughout the state of WI

Program Implementation

- 2017 Pilot
- Pilot Expansion
- Post-Pilot Implementation
- WI Idea Grant Team



*Mistakes Do Not Define
Who You Are*

Core Strategies

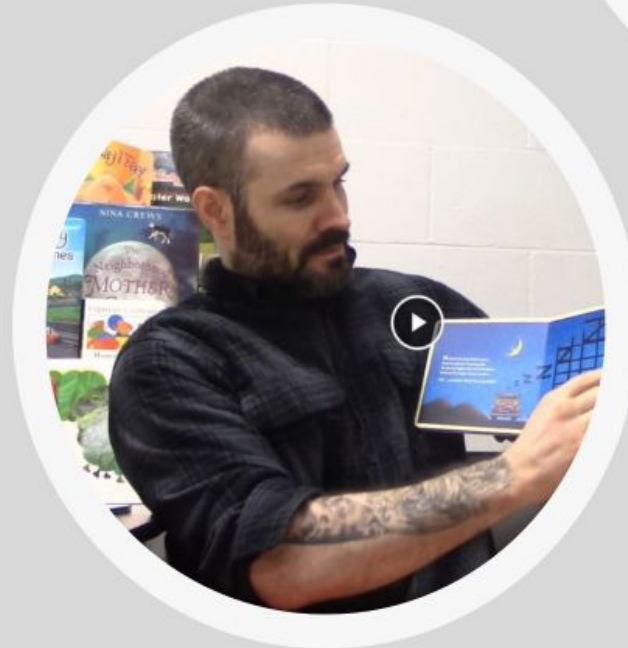
Parent Education

Family-Friendly Environments

TeleStory

Family Literacy Kits

*Making Reading Memories



***Mistakes Do Not Define
Who You Are***

Rent Smart Program

<https://fyi.extension.wisc.edu/rentsmart/>



Extension

UNIVERSITY OF WISCONSIN-MADISON
BROWN COUNTY

Rent Smart is designed to help those individuals who have little to no rental experience and those who have had difficulty obtaining rental housing. Participants may be first time renters, as they graduate from school, or homeowners, transitioning to renting, individuals with poor rental or credit history, or individual who have other issues that may cause potential landlords to perceive them as high-risk tenants.

UW Center for Cooperatives

What is a co-op?

A cooperative or co-op is a business that is owned and democratically controlled by the members who use or produce its services.

What we do

- Cooperative Development
 - Our team of cooperative development specialists is available to help you start a new co-op, strengthen an established co-op, or convert an existing business to the cooperative structure.
- Education & Training
 - UWCC develops regional workshops, national conferences, and tailored education for boards and visiting groups. We educate future cooperative leaders through campus courses.
- Cooperative Research
 - We produce research that sheds light on the unique attributes of cooperatives and advances our understanding of how cooperatives benefit people and communities.



For information and resources, visit our website

<https://uwcc.wisc.edu/>

Extension Brown County Community Gardens

- Raised Beds at the Brown County Jail
- 14 Community Gardens



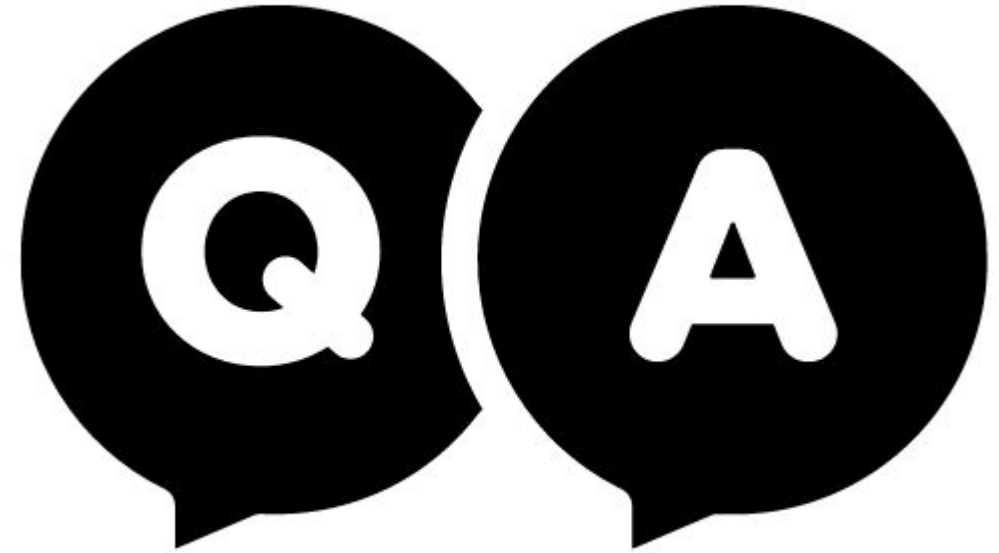
Extension

UNIVERSITY OF WISCONSIN-MADISON
BROWN COUNTY



UW-Madison Extension Reentry Programs & Resources

- What questions do you have?
- Reflections and comments to share?
- Ideas of how you can take action?



CLOSING

Please share a **one-word description** of your experience here today.

Thank you again for being here! Please use the QR Code below to complete a brief survey. Your feedback is important and helpful to our work!



*Mistakes Do Not Define
Who You Are*

Event page including PowerPoint



go.wisc.edu/mywayout

*Mistakes Do Not Define
Who You Are*

