



# NEWS FROM EXTENSION

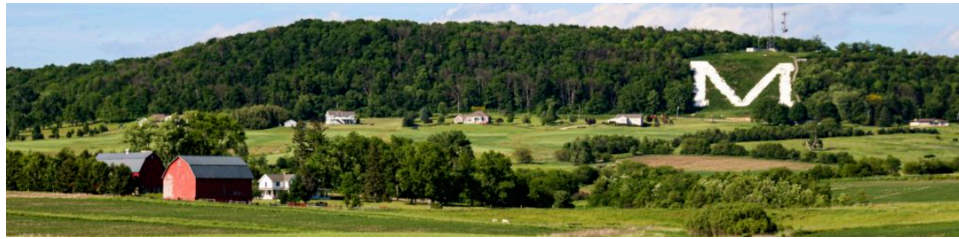
UW-MADISON DIVISION OF EXTENSION WINNEBAGO COUNTY



## **Additional Newsletter Items That We Don't Want You To Miss** from Community Development Educator, Mia Ljung!

Questions about these upcoming events? Contact Contact Mia Ljung with any questions:

[mia.ljung@wisc.edu](mailto:mia.ljung@wisc.edu) or 920-470-4645



## **Register today for Wisconsin Connecting Entrepreneurial Communities Conference!**

Strengthening Rural Wisconsin's Entrepreneurial Ecosystem by Engaging Rural Entrepreneurs, Leaders, and Innovators in Rural Communities

**May 30-31, 2024 | Platteville, WI**  
**(HURRY! Registration closes soon!)**

Community Development Educator Mia Ljung is on the steering committee and will co-lead a presentation for the inaugural Connecting Entrepreneurial Communities Conference. She would like to would like to invite you to this unique conference! The conference is geared to rural leaders across Wisconsin to learn and share their experiences in how entrepreneurship can provide a competitive advantage for community economic development.

Come to Platteville this spring and explore how local entrepreneurship drives the Driftless Region's development. Network with fellow community champions from around the state. And gain new technical skills for promoting entrepreneurship in your own small town.

[Subscribe](#) to our email list.

Register and learn more: <https://economicdevelopment.extension.wisc.edu/connecting-entrepreneurial-communities-conference/>

---

## Introduction to Plain Language Registration is Open!



The high-demand plain language workshop is coming back!

Join this virtual training to learn strategies for word choice, font selection, grammar use, user testing, and more that help us communicate quickly and effectively with both native and non-native English speakers.

Choose a date and time that works for you:

- Wednesday, June 26, 9:30-11:30 am
- Thursday, June 27, 6:00-8:00 pm

Register here: [go.wisc.edu/plain](https://go.wisc.edu/plain)

Introduction to Plain Language is a partnership between UW-Madison's Cultural Linguistic Services and Division of Extension.

---



## Join us for The Entrepreneur of Color Spotlight (EoC Spotlight)

In 2024, we feature replays of our amazing entrepreneurs, with recordings from 2020 onwards. Recently, some Spotlights have had technical difficulties, but keep checking in as we work on resolving this out!

Tune in online every Thursday at 6:30 pm CST on Facebook Live - [www.facebook.com/EoCSpotlight](https://www.facebook.com/EoCSpotlight) or YouTube - [@EoCSpotlight](https://www.youtube.com/@EoCSpotlight)

---

Please like and subscribe!

[Subscribe](#) to our email list.

Did you know?

- The EoC Spotlight empowers entrepreneurs of color in northeast Wisconsin, highlights their business journey and strategies, and invites viewers to interact and learn.
- The business owners are compensated for their time and expertise.
- The interviews are either done live or prerecorded.

Recruitment for 2025 EoC Spotlight entrepreneurs will start this Fall!

The EoC Spotlight is brought to you by the Appleton Public Library, the ColorBold Business Association, and Extension Outagamie & Winnebago counties.

---

Feedback, questions or accessibility issues: [info@extension.wisc.edu](mailto:info@extension.wisc.edu) | © 2023 The Board of Regents of the University of Wisconsin System  
[Privacy Policy](#) | [Non-Discrimination Policy & How to File a Complaint](#) | [Disability Accommodation Requests](#)

An EEO/AA employer, University of Wisconsin-Madison Division of Extension provides equal opportunities in employment and programming, including Title VI, Title IX, the Americans with Disabilities Act (ADA) and Section 504 of the Rehabilitation Act requirements.

**Share this email:**



**Manage** your preferences | **Opt out** using **TrueRemove®**

Got this as a forward? **Sign up** to receive our future emails.

View this email **online**.

625 E County Rd. Y Suite. 600  
Oshkosh, WI | 54901 US

This email was sent to .

*To continue receiving our emails, add us to your address book.*

**emma**

---

[Subscribe](#) to our email list.